

DSA-2020

Solid-state Network Digital Signage Media Player

NEW



Features

- Compact size for easy installation & mounting
- Fanless design for better reliability
- Support MPEG 480P resolution
- Support SD/SDHC/MS/MS Pro flash memory cards
- Support VESA mounting
- Powerful schedule management features with included PC software
- Dedicated non-PC technology
- Plug-and-play ease of use



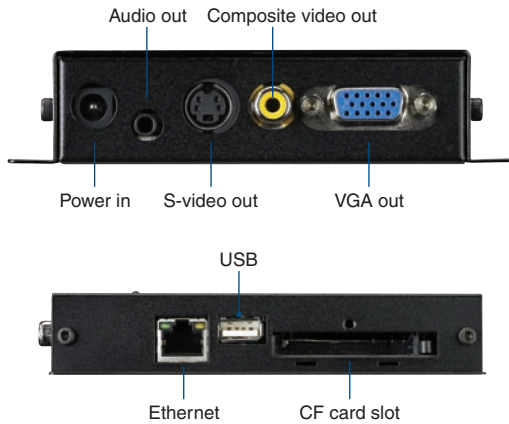
Introduction

DSA-2020 is an industrial-grade digital signage system with flexible network management and physical media content update features. This easy to implement network appliance enables centralized control, scheduling and delivery of multimedia content through IP/Ethernet networks. The compact size design and the standard mounting bracket of DSA-2020 makes it can be easily mounted behind the signage display devices. The DSA-2020 features leading video decoding hardware technology capable of withstanding 24 x 7 x 365 operation cycle with almost no maintenance effort. Dedicated digital signage technology eliminates the risks of virus infection and operating system crash commonly found in PC-based solutions.

Specifications

Media formats	Video codec	MPEG-1/2 MP @ ML (480p) MPEG-4 ASP @ L2 AVI
	Video format	MPEG-1/2/4
	Audio codec	2 channels, MPEG-1 and MPEG-2 Layers I, II and III (MP3)
	Still image format	JPEG
	Text	Variable scrolling speed
Display Compatibility	Aspect ratio	4:3 (landscape mode only)
	Output resolution	4:3 ratio -- 640x480
	Display connector	VGA
Player Function	Program update	Through LAN or USB storage
	Playlist	Scheduling playback, endless loop playback, auto play after power on
Network	10/100 Mbps	1 x RJ-45
I/O Ports	VGA	1 x D-Sub 15-pin
	Composite	1 x RCA jack
	S-Video	1 x Mini-DIN 4-pin connector
	R/L channel analog	1 x 3.5Ø ear-phone jack
	RC-232C	1 x RJ-11
	USB 2.0 Host	1 x USB Type A connector
Storage	IDE	4GB CF card (for approx. 3 hours of 480p video)
Power	Power computation	Approx. 4W
	Power supply	Input: 5V @ 2A DC
Environment	Temperature	0 to 40° C
	Relative humidity	5-85% @ 40° C
Physical	Dimension	134 x 114 x 25 mm (5.3" x 4.4" x 1.0")
	Net Weight	Approx. 0.8 kg (1.8 lb.)
Safety	Certifications	CE, FCC, UL

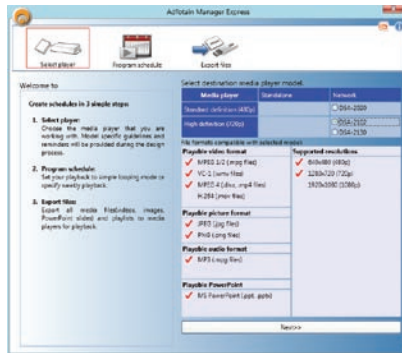
I/O ports for DSA-2020



POPPI Screen Media Standards Support

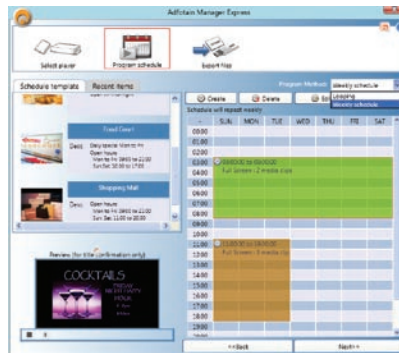
- S1 (JPEG 480p baseline)
- S4 (MPEG L2 audio)
- S5 (MP3 audio, 384Kbps)
- S6 (MPEG-1 SIF, 3Mbps CBR)
- S7 (MPEG-1 480p, 10Mbps CBR)
- S9 (MPEG-2 480p, 6Mbps CBR)
- E7 (MPEG-4 ASP, 480p, 10Mbps CBR)

Create Your Digital Sign in 3 Easy Steps:



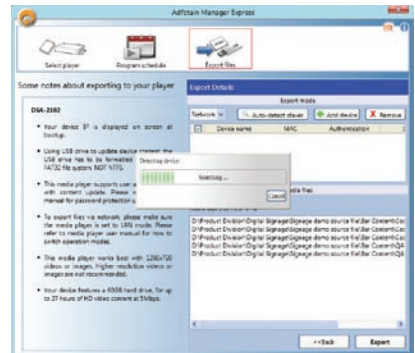
Publish PowerPoint slides directly

Manager Express seamlessly imports your original PowerPoint slides, lets you schedule them alongside videos, graphics, text message, and publishes the auto-advancing slide sequences to media players, all within the same program.



Easy to use scheduling features

Plan your content in a simple looping mode or on a weekly schedule. Simple looping mode is as easy as adding and rearranging media files for repeat playback, 24 hours a day. Users can also set the player to turn off the display during off-hours. For more advanced scheduling, a visual weekly schedule mode is also available.



1-to-Many Content Delivery via Local Area Network

Manager Express allows users to export media files to multiple media players simultaneously over the network or via removable storage, depending on your player's capabilities. Media content files are delivered via the local area network (LAN) with just one click of the mouse. In non-networked environments, users can export files to a USB drive or a CF card.

Ordering Information

Part No.	Description
DSA-2020SAE	Network Digital Signage Media Player w/ Manager Express S/W

Packing List

1. DSA-2020
2. Power Adapter
3. CF Card Slot Protective Plate and Screw
4. Manager Express CD
5. Ethernet Cable
6. Audio adapter cable
7. Audio cable
8. Quick start guide